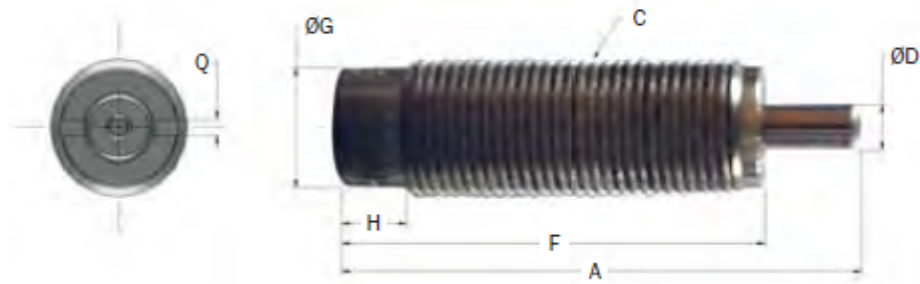


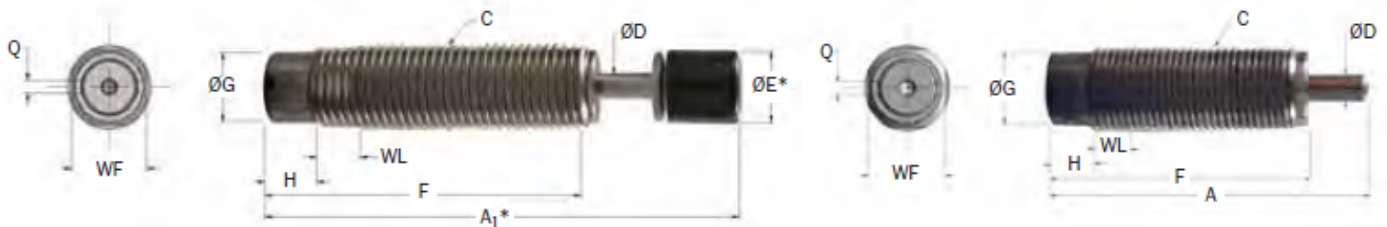
AMORTISSEURS SERIE HYDRAULIQUE NON-REGLABLE TK

Standard



Catalog No./ Model	Bore Size In. (mm)	(S) Stroke In. (mm)	(E _T) Max. In.-lbs./cycle (Nm/c)	(E _T C) Max. In.-lbs./hour (Nm/h)	(F _p) Max. Shock Force lbs. (N)	Nominal Coil Spring Force		Weight (mass) oz. (g)
						Extended lbs. (N)	Compressed lbs. (N)	
TK 6M	.28 (4,2)	.25 (4,0)	9 (1,0)	31,863 (3 600)	81 (360)	0.2 (1,0)	0.8 (3,5)	.14 (4)
TK 8M	.16 (4,2)	.25 (4,0)	9 (1,0)	42,480 (4 800)	81 (360)	0.2 (1,0)	0.8 (3,5)	.2 (6)

Catalog No./ Model	Damping Constant	A In. (mm)	C In. (mm)	ØD In. (mm)	F In. (mm)	G In. (mm)	H In. (mm)	Q In. (mm)
TK 6M	-1, -2, -3	1.14 (28,0)	M6 x 0,5	.08 (2,0)	1.0 (25,0)	.20 (5,0)	.16 (4,0)	.04 (1,0)
TK 8M	-1, -2, -3	1.14 (29,0)	M8 x 1,0	.08 (2,0)	1.0 (25,0)	.25 (6,4)	.16 (4,0)	.04 (1,0)



Catalog No./ Model	(S) Stroke In. (mm)	(E _T) Max. In.-lbs./cycle (Nm/c)	(E _T C) Max. In.-lbs./hour (Nm/h)	(F _p) Max. Shock Force lbs. (N)	Nominal Coil Spring Force		(F _D) Max. Propelling Force lbs. (N)	Weight (mass) oz. (g)
					Extended lbs. (N)	Compressed lbs. (N)		
TK 10M (B)	.25 (6,4)	50 (6,0)	115,000 (13 000)	315 (1 400)	0.3 (1,5)	2.2 (10,0)	—	.6 (17)

Catalog No./ Model	Damping Constant	A In. (mm)	A ₁ In. (mm)	C In. (mm)	D In. (mm)	ØE In. (mm)	F In. (mm)	G In. (mm)	H In. (mm)	Q In. (mm)	WF In. (mm)	WL In. (mm)	Stroke (S) In. (mm)
TK 10M (B)	-1 to -9	1.75 (44,6)	2.14 (54,4)	M10 x 1,0 (10,0)	.12 (3,1)	.35 (8,5)	1.50 (38,0)	.33 (8,3)	.20 (5,0)	.06 (1,5)	.35 (9,0)	.16 (4,0)	0.25 (6,4)

4.19.0