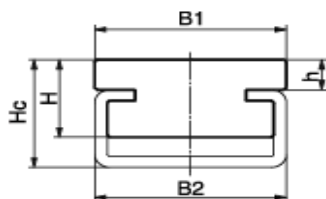
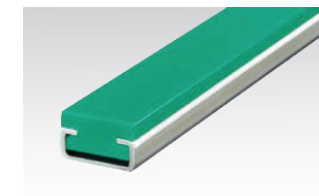
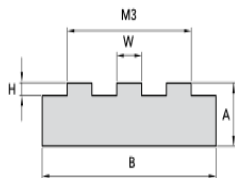
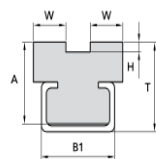
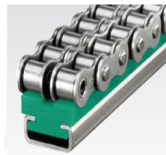
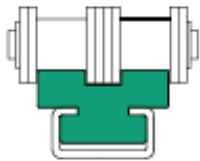
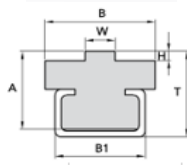
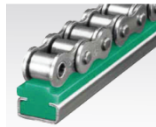
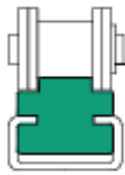


# GLISSIERES PE-UHMW - Profilées



STANDARD	PREMIUM	AxB/B1	HxW	Rail
	CT06B	14x17	1,5x5,6	C3
GCCT-08B	CT08B	15x20	2,2x7,4	C3
GCCT-10B	CT10B	15x20	2,6x9,3	C3
GCCT-12B	CT12B	15x20	2,4x11,4	C3
GCCT-16B	CT16B	15x28	3,5x16	C5
	CT20B	14x28	4,2x18	C5
	CT24B	23x33	5,5x24	C9
	CT28B	23x38	6,8x30	C9
	CT32B	23x38	7,7x30	C9

Certaines dimensions varient pour les versions PREMIUM

STANDARD	PREMIUM	AxB	HxW	Rail
GCCT2-06B	CTD06B	15x15,7	1,5x5,3	C3
GCCT2-08B	CTD08B	15x21,4	2,2x7,2	C3
GCCT2-10B	CTD10B	15x25,9	2,6x9	C5
GCCT2-12B	CTD12B	15x30,7	2,4x10,9	C5
GCCT2-16B	CTD16B	20x48,3	3,5x15,8	C9
	CTD20B	22x60	4,2x18,2	C12
	CTD24B	25x60	5,5x23,5	C12

Certaines dimensions varient pour les versions PREMIUM

PREMIUM	AxB	H-M3-W	Rail
CTT06B	15x30	2,2-34,9-7,1	C5
CTT08B	15x35	2,6-42,1-8,9	C5
CTT10B	15x50	2,4-49,7-10,7	C4
CTT12B	18x50	3,5-79,5-15,7	C4
CTT16B	20x80	4,2-91-18	C6
CTT20B	20x91	5,5-23,4-120	C6

Certaines dimensions varient pour les versions PREMIUM

CF	B1	B2	H	Hc	h	Rail
CF245	20	24	5	6	1	C3
CF2410	20	24	10	11	5,8	C3
CF2010	20	20	10	14	4	C3
CF2014	20	20	14	17	7	C3
CF2016	20	20	16	20	10	C3
CF2810	28	28	10	15	3	C5
CF2814	28	28	14	18	6	C5
CF3812	38	38	12	22	4	C9
CF3818	38	38	18	25	7	C9
CF6020	60	60	20	30	10	C12
CF5018	50	50	18	20	10	C12
CF8018	80	80	18	20	10	C12

**Nombreux modèles disponibles. Multi-Matière PE/PEHD/POM/PEEK. Consultez-nous.**

